





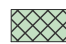




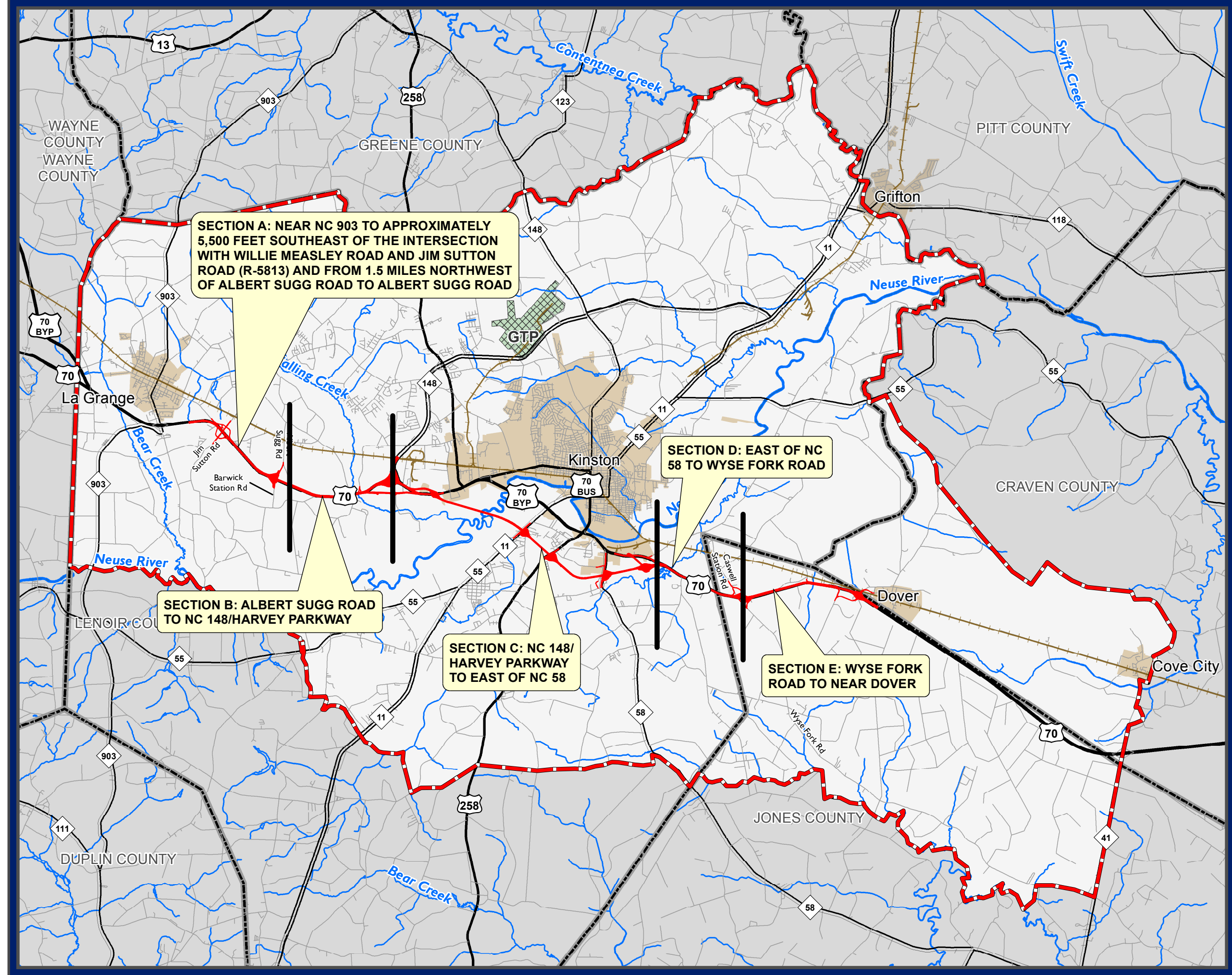
R-2553 STIP Section Breaks

Legend

-  Study Area
-  R-2553
-  Railroad
-  US Highway
-  NC Highway
-  Secondary Road
-  Global TransPark (GTP)
-  Municipal Boundary
-  County Boundary



This map is for reference only.
Sources: AECOM, CGIA, City of Kinston, Craven County, ESRI, HPO, Jones County Lenoir County, NCDOT, NCEM, NCONemap, NRCS, USFWS



SECTION A: NEAR NC 903 TO APPROXIMATELY 5,500 FEET SOUTHEAST OF THE INTERSECTION WITH WILLIE MEASLEY ROAD AND JIM SUTTON ROAD (R-5813) AND FROM 1.5 MILES NORTHWEST OF ALBERT SUGG ROAD TO ALBERT SUGG ROAD

SECTION B: ALBERT SUGG ROAD TO NC 148/HARVEY PARKWAY

SECTION C: NC 148/HARVEY PARKWAY TO EAST OF NC 58

SECTION D: EAST OF NC 58 TO WYSE FORK ROAD

SECTION E: WYSE FORK ROAD TO NEAR DOVER