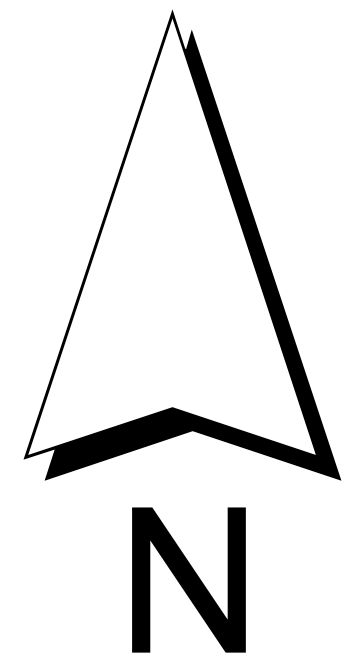




NORTH CAROLINA DEPARTMENT
OF TRANSPORTATION
DIVISION OF HIGHWAYS
PROJECT DEVELOPMENT AND
ENVIRONMENTAL ANALYSIS BRANCH

**PROJECT STUDY AREA -
PRELIMINARY ALTERNATIVES MAP
NC 143 FROM
WEST BUFFALO CREEK TO
NC 143 BUSINESS WEST OF
ROBBINSVILLE
GRAHAM COUNTY
TIP PROJECT R-2822B**



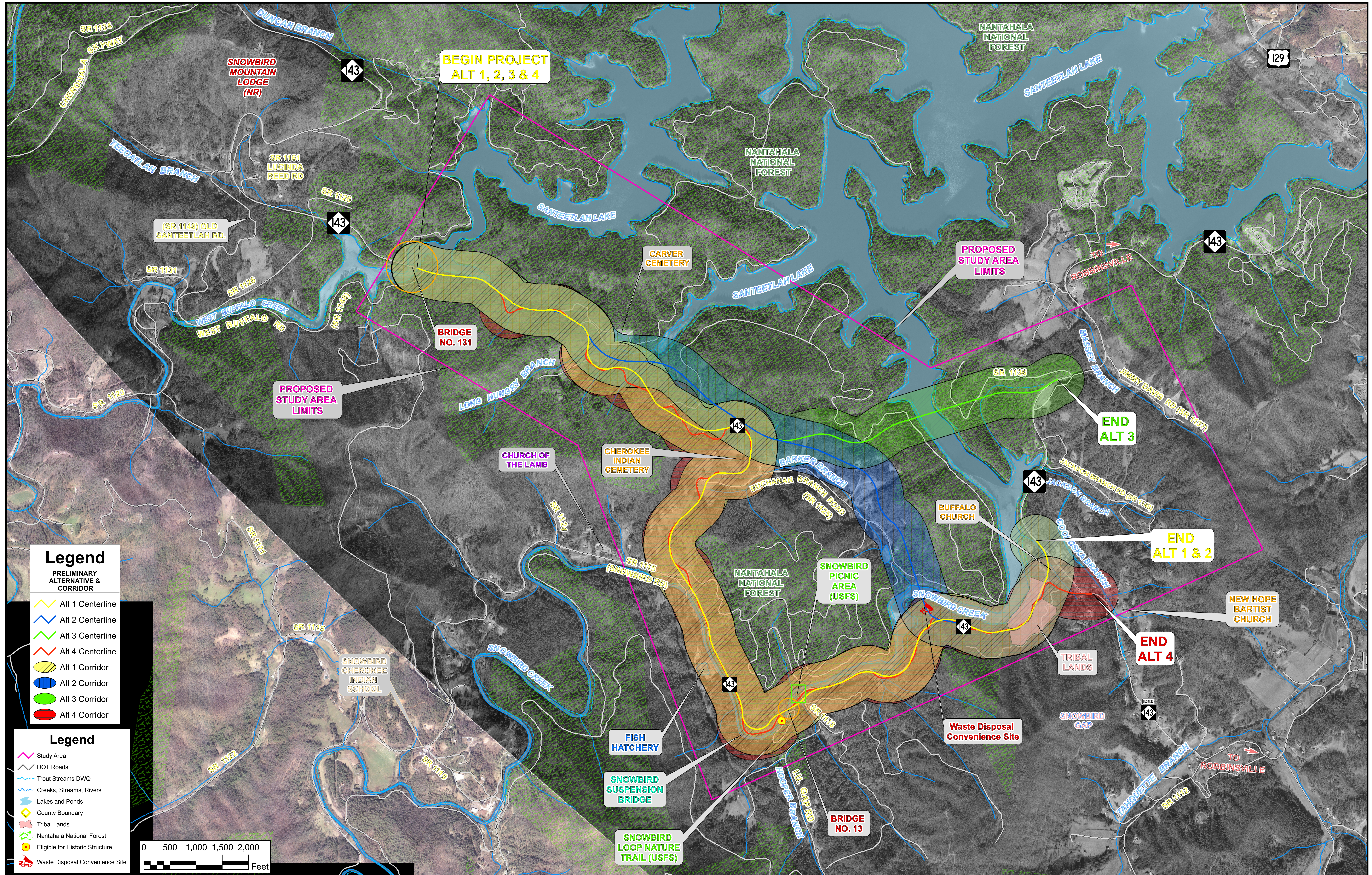
County:
GRAHAM

Div: **14** TIP# **R-2822B**

WBS:
34508.1.1

APRIL 2008

**Figure
2**



Legend

PRELIMINARY ALTERNATIVE & CORRIDOR

- Alt 1 Centerline
- Alt 2 Centerline
- Alt 3 Centerline
- Alt 4 Centerline
- Alt 1 Corridor
- Alt 2 Corridor
- Alt 3 Corridor
- Alt 4 Corridor

Legend

- Study Area
- DOT Roads
- Trout Streams DWQ
- Creeks, Streams, Rivers
- Lakes and Ponds
- County Boundary
- Tribal Lands
- Nantahala National Forest
- Eligible for Historic Structure
- Waste Disposal Convenience Site