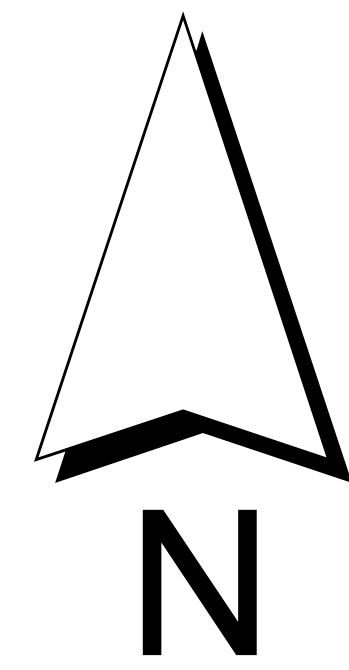




NORTH CAROLINA DEPARTMENT
OF TRANSPORTATION
DIVISION OF HIGHWAYS
PROJECT DEVELOPMENT AND
ENVIRONMENTAL ANALYSIS BRANCH

ENVIRONMENTAL FEATURES MAP
FOR CP2

NC 143 FROM
WEST BUFFALO CREEK TO
NC 143 BUSINESS WEST OF
ROBBINSVILLE
GRAHAM COUNTY
STIP PROJECT R-2822B



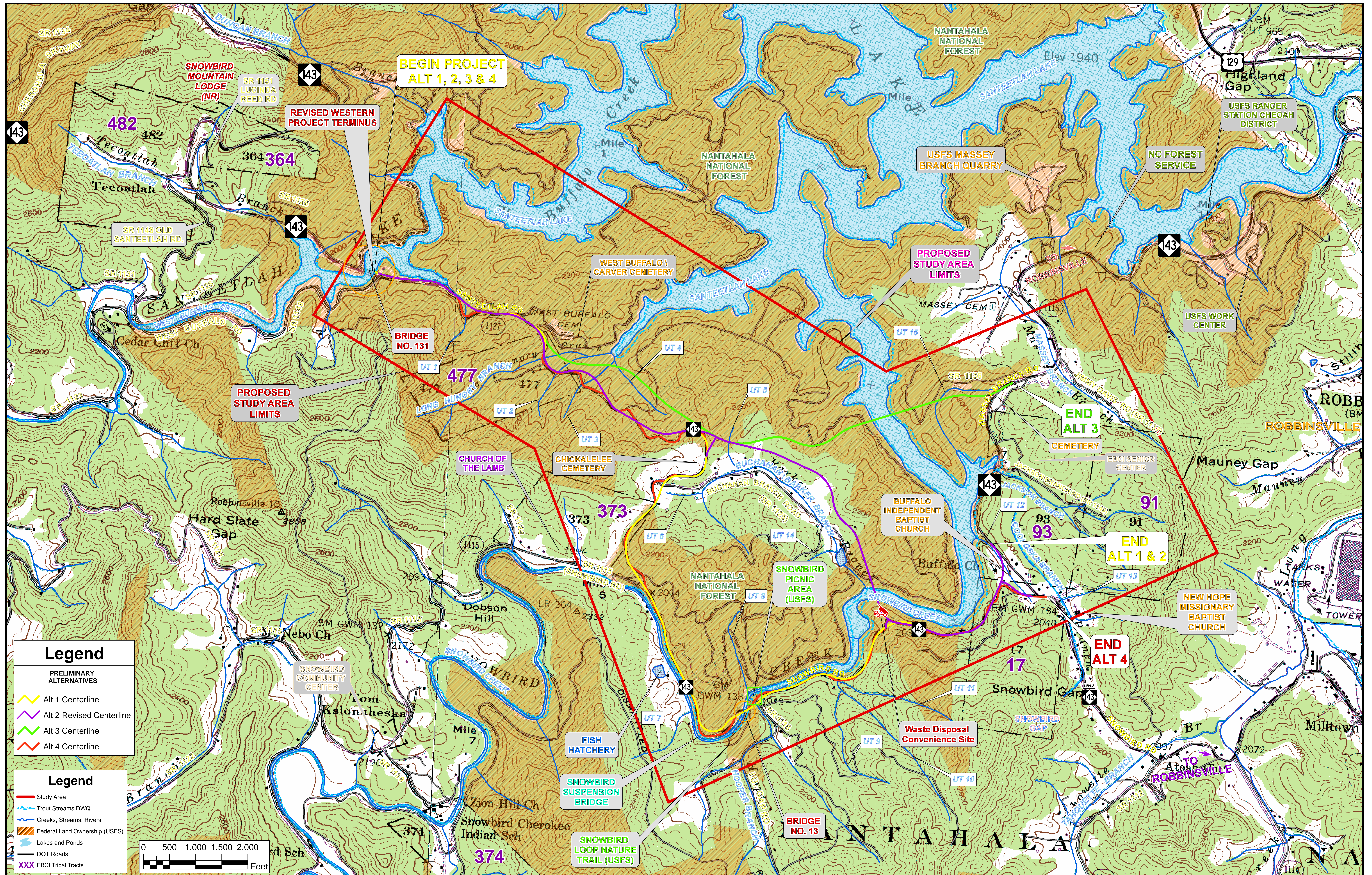
County:
GRAHAM

Div: **14** STIP#
R-2822B

WBS:
34508.1.1

Date:
DECEMBER 2010

Figure
4



Legend

PRELIMINARY ALTERNATIVES

- Alt 1 Centerline
- Alt 2 Revised Centerline
- Alt 3 Centerline
- Alt 4 Centerline

Legend

- Study Area
- Trout Streams DWQ
- Creeks, Streams, Rivers
- Federal Land Ownership (USFS)
- Lakes and Ponds
- DOT Roads
- XXX EBCI Tribal Tracts

