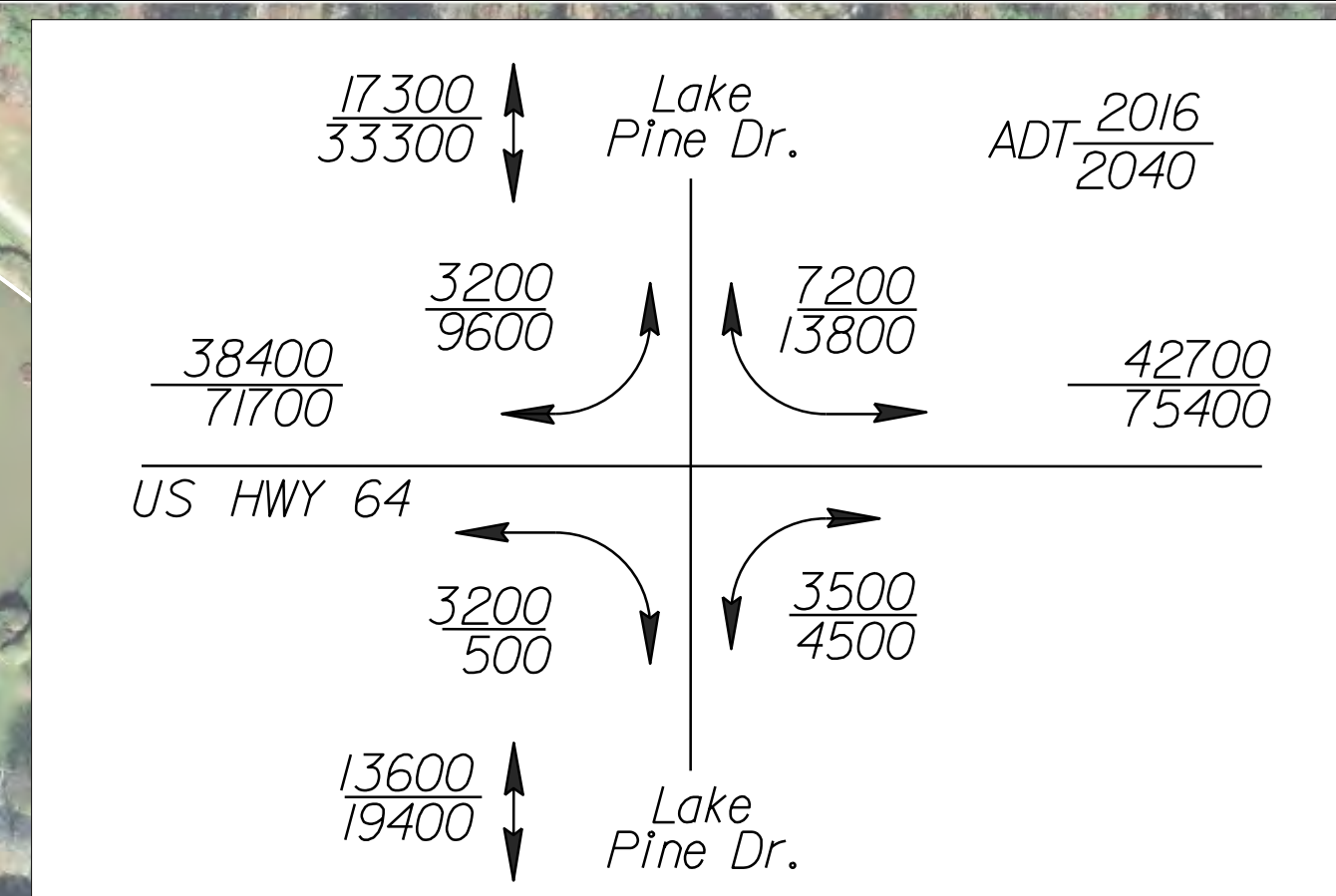


MATCHLINE STA. 157 + 00.00
SEE SHEET 2

MATCHLINE STA. 197 + 00.00
SEE SHEET 3



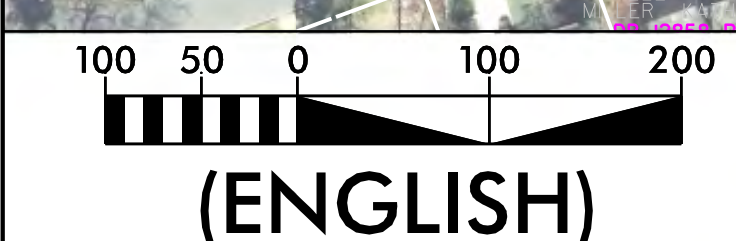
2016 NCDOT AERIAL PHOTOGRAPHY
IMPACTS AND DRIVEWAY TIES
Limits of construction and their impacts shown on this hearing map are based off of preliminary designs and preliminary ground surveys. During the final design stage, designers will attempt to minimize impacts where feasible using final ground surveys. Final driveway locations will also be determined during final design using final surveys.

DESIGN DATA

Functional Classification	= EXPRESSWAY
Design Speed	= 60 MPH
Maximum Superelevation	= 0.08

LEGEND

	BUILDINGS
	EXISTING RIGHT-OF-WAY
	EXISTING RAILROAD RIGHT-OF-WAY
	EXISTING ROADWAY
	EXISTING ROADWAY TO BE REMOVED
	EXISTING CONCRETE SIDEWALK
	POTENTIAL IMPACT AREA
	PROPOSED ROADWAY
	PROPOSED STRUCTURES, ISLAND, CURB AND GUTTER, AND SIDEWALK
	EXISTING STRUCTURES TO BE REMOVED
	PROPERTY LINES
	PROPOSED MULTISELVE TRAIL
	LAKES, RIVER, STREAMS AND PONDS
	EXISTING UTILITY EASEMENT
	CITY LIMIT LINE
	PROPOSED TRAFFIC SIGNAL



INCOMPLETE PLANS
DO NOT USE FOR R/W ACQUISITION

PRELIMINARY PLANS
DO NOT USE FOR CONSTRUCTION

UTILITY INFORMATION:
To provide greater visual clarity, existing and proposed utilities are not shown on these maps or on other displays. The utility information shown on these maps is limited to locations of major existing and potential utility easements. The designs shown on these maps, including utility easements, are preliminary and are subject to change.

PUBLIC MEETING MAP
TIP PROJECT U-5301
PROPOSED US 64 CORRIDOR IMPROVEMENTS
FROM WEST OF LAURA DUNCAN RD TO
WEST OF US 1 INTERCHANGE
WAKE COUNTY, NORTH CAROLINA

CONCEPT 1: SUPERSTREET (LAURA DUNCAN - TIGHT DIAMOND INTERCHANGE, LAKE PINE DRIVE - DOUBLE CONTRAFLOW INTERSECTION)

JUNE 2018 **ROLL 2 OF 3**

